

## Insta-seal (caulking strip) application

**Product includes...** 25-foot-long caulking strip on our E-Z applicator roll dispenser with 24" long pre attached webbing strap, 15" additional product test strip, & applicator tool.

**Common supplies needed for install...** rubbing alcohol, scissors, water spray bottle, soft rag/ towel; painters' tape, clear sealant/ caulking (non-silicone), paper towels

1. **Pre-test product!** Get to know how your product works with the 15" long included sample. Its best to try several 5" long sections. Try many tests out on different areas to become comfortable working with before starting your installation of the Insta-Seal product. You can reuse the same section tested more than once (for testing purposes only).

**(Go through all install directions & tips first, then try out & test installing)**

Note: This product is designed & intended to go directly over the factories (previous) caulking jobs, that fail over time, forming smaller cracks & voids, thus letting in water.

2. **Prep surface areas** before applying the product!....

- Remove any surface debris & possible wax coating with rubbing alcohol or other solvents until the area becomes "squeaky clean", meaning your finger when pushed across the surface won't slide, but have more of an actual grip.
- If any kind of silicone product was used previously, this would need to be completely removed by scraping down & using solvents, as nothing will re-stick to silicone products. A silicone product usually has more of a flexible rubber type feeling that does not harden. Again, the surface needs to be "squeaky clean" before starting.
- This would also be a good time to remove any unwanted sealants (that may have larger unappealing cracks) & clean up the look of jobs preformed in the past; as once the clear caulking strip is down in place, you will see everything that was previously there.
- Note: Our  $\frac{3}{4}$ " size caulking strip works well to cover "wider" previous sealant jobs. This allows keeping the previous work in place, and going right over it with the wider caulking strip. In this case, (as long as silicone was not used), you can push in any raised cracked area's (with the applicator tool) into the crack itself. This helps to re-seal up the current crack with the current sealant in place & smooths out any raised areas which come from the crack itself. Then clean up as mentioned above, and apply the wider Insta-Seal product right over the existing sealant. In most cases the caulking strip should be wide enough to attach to both sides of the old sealant, thus making the seal. You would just need to spend a little more time pushing the caulking strip in place to make contact, because of the unlevel surfaces from the old sealant. However, this is considerably faster than removing all of the older sealant, and it still gives you a clean overall look.

3. Place pre-attached webbing strap around neck or belt loop, (this is attached to the main product roll). This allows you to free up your needed hands during the installation.

**TIP //** Use clothing with pockets, to hold other needed items, such as; soft rag, scissors, applicator tool, small spray bottle (for water, to hang off pocket).

**TIP //** Make sure your hands are very clean, with no oils, etc., to eliminate any finger print transfers, or other debris getting on the adhesive side of the product.

#### 4. Determine starting point & apply product in place...

- a) *Determine your starting point, (may be a left-hand corner area, working your way down to the right, or vice versa, or upper & moving downward.)* Remove small section of backing, approx. 4"-6" to start.
- b) Spray adhesive side lightly with water bottle & rub your (clean) finger down & up to evenly coat the backing, so it's wet. (Do not spray water directly on the surface of RV)
- c) Attach to the raised side of the trim first by pushing in place & gliding your finger back & forth, (**Note: determine the desired distance above the raised trim before attaching**), and keep that distance as even as possible while working your way down). *This method will help keep a straight upper line down the entire section. See pic.*

**TIP //** It's best to work with smaller sections while applying in place, approx. 6 to 12 inches at a time works well. Other wise the backing will dry out to quickly & the product won't slide in place nicely.

- d) Once the Insta Seal has been placed on the small raised section, you can go ahead and push in the remaining side into the groove, or opposite surface area. **First**, push in with your fingers as much as possible & **Second**, use applicator tool to lightly push straight back in place FURTHER till it comes in contact with the opposite surface. Note: do not use a sawing motion with the tool, as this can damage the product.

**TIP //** The goal is to reduce the amount of spacing / bubble in the corner area while working down the seam you're sealing. Note, a little spacing is still normal. The supplied applicator tool will help you push the product in further to close up this gap.

**TIP //** This two-step pushing in place method, needs to happen **quickly** while the backing of the tape is damp, (as this helps it to slide in place more freely), you may need to re-dampen the back side if it's not pushing back in place. That would indicate that the backing is too dry, thus not allowing it to slip any. **The whole two-step process should push in place within seconds (when doing say an 8" section), using your fingers & applicator tool (in-hand).**



- e) Once pushed in place with your fingers & tool; use a **soft rag** to continue applying pressure by **gliding** a rag back and forth over the section you're working on to push out any remaining moisture. The product may not be fully attached until all the moisture is pushed out. *This part will take longer, and is not important to do quickly like the first part.*

**TIP //** Also simply pushing in some stubborn areas, with your finger tip, (straight in, no rubbing or gliding) will help to get rid of & bond some small area's that may not have attached all the way yet.

**Note:** It is normal that the product may slip & shift slightly until most of the moisture is pushed out with the rag.

- f) Continue working your way down in this fashion until you meet the opposite end. Once you come to the end, pre-determine & mark where to make your straight cut. Give your self a little extra, as you can always pull up and trim of some more if needed, then push back down in place to re-seal with applicator tool & rag.

## 5) **Joining your seams together...**

- a) Its best to use a small amount of a quality clear sealant (do not use anything silicone related) to bring together & seal up area's where two or three of the Insta Seal products come together, or where it may start or end by itself. This will prevent any lifting at the ends and seams them nicely together to form one seamless section.

**Note:** Do not use any sealant that contains silicone, as nothing sticks to silicone including itself. Its best to have used a sealant that can be reapplied directly back down on itself for any future repairs if needed. Otherwise, silicone products need to be completely stripped down and removed in order to reapply any other sealant again.

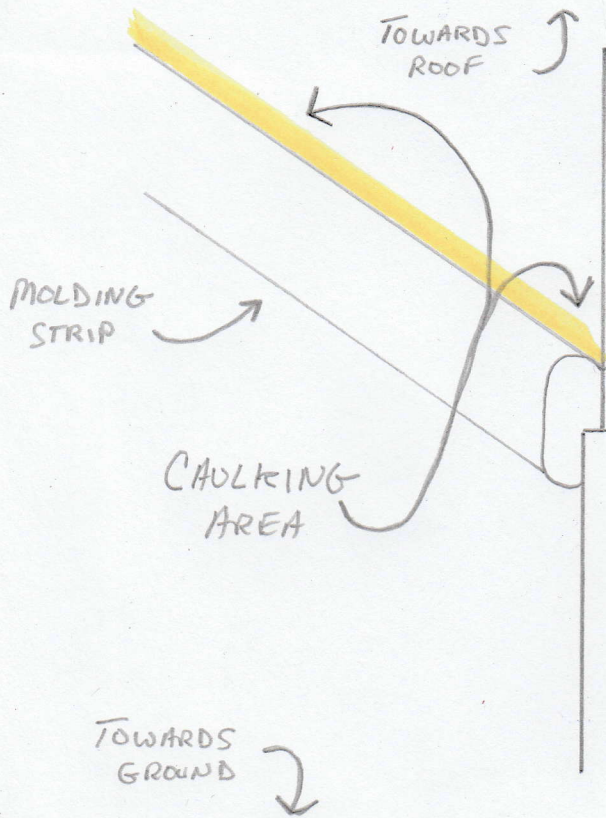
- b) For a clean looking, no mess seam; simply tape off the area to seam together with painters' tape, apply the clear sealant, wipe down in place several times with finger (to insure it gets down in the cracks / spaces), then pull off the tape slowly while its still wet, or immediately after you wipe the sealant in place.

**Note:** It will be normal for some of the sealant area's to be thicker than others, because of the variation in raised surfaces. It may take a few days sometimes for a thicker area to fully harden & cure. During this time, its best not to push in at those areas.

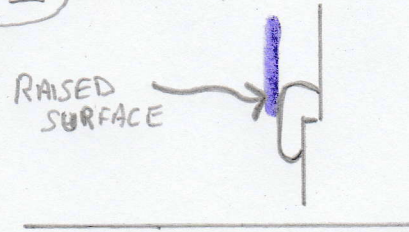
**See picture diagrams ...**



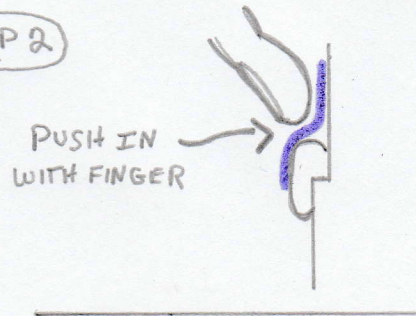
# SIDE WALL SEAM



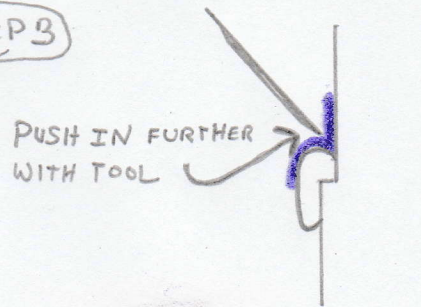
## STEP 1



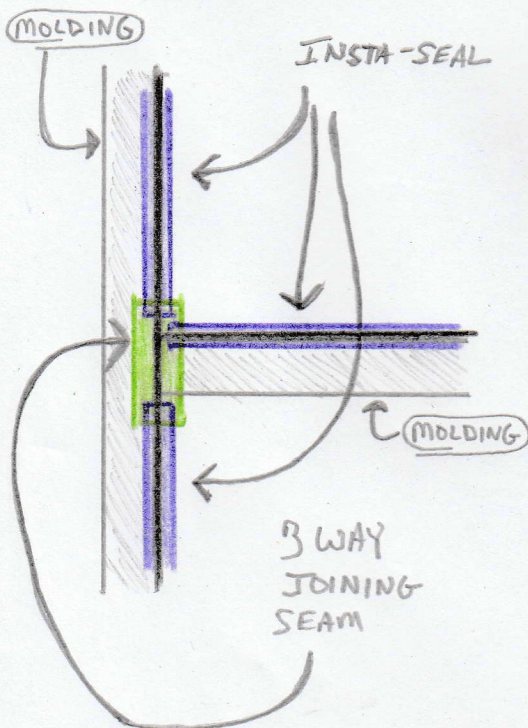
## STEP 2



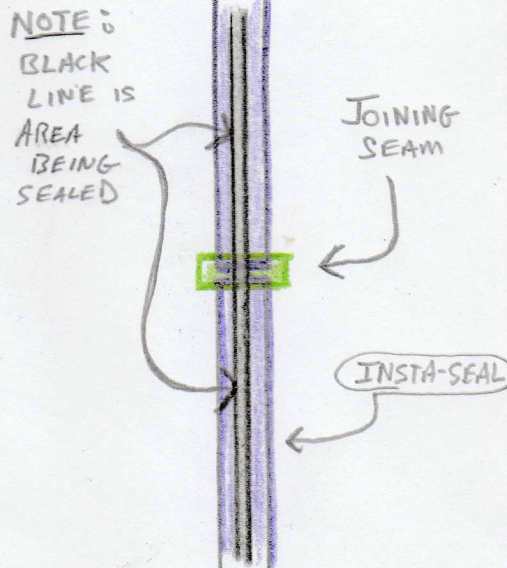
## STEP 3



# 3 WAY SEAM



# EXTENDED SEAM



# START/END SEAM

